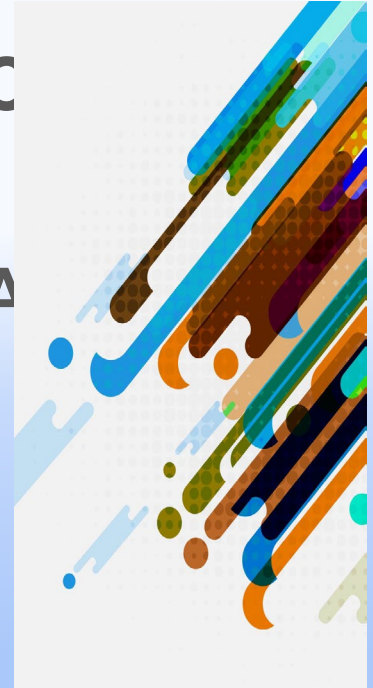


**Clovis Unified School District
Special Education
Community Advisory Committee (CA**

**Continuum of Services
20242025**

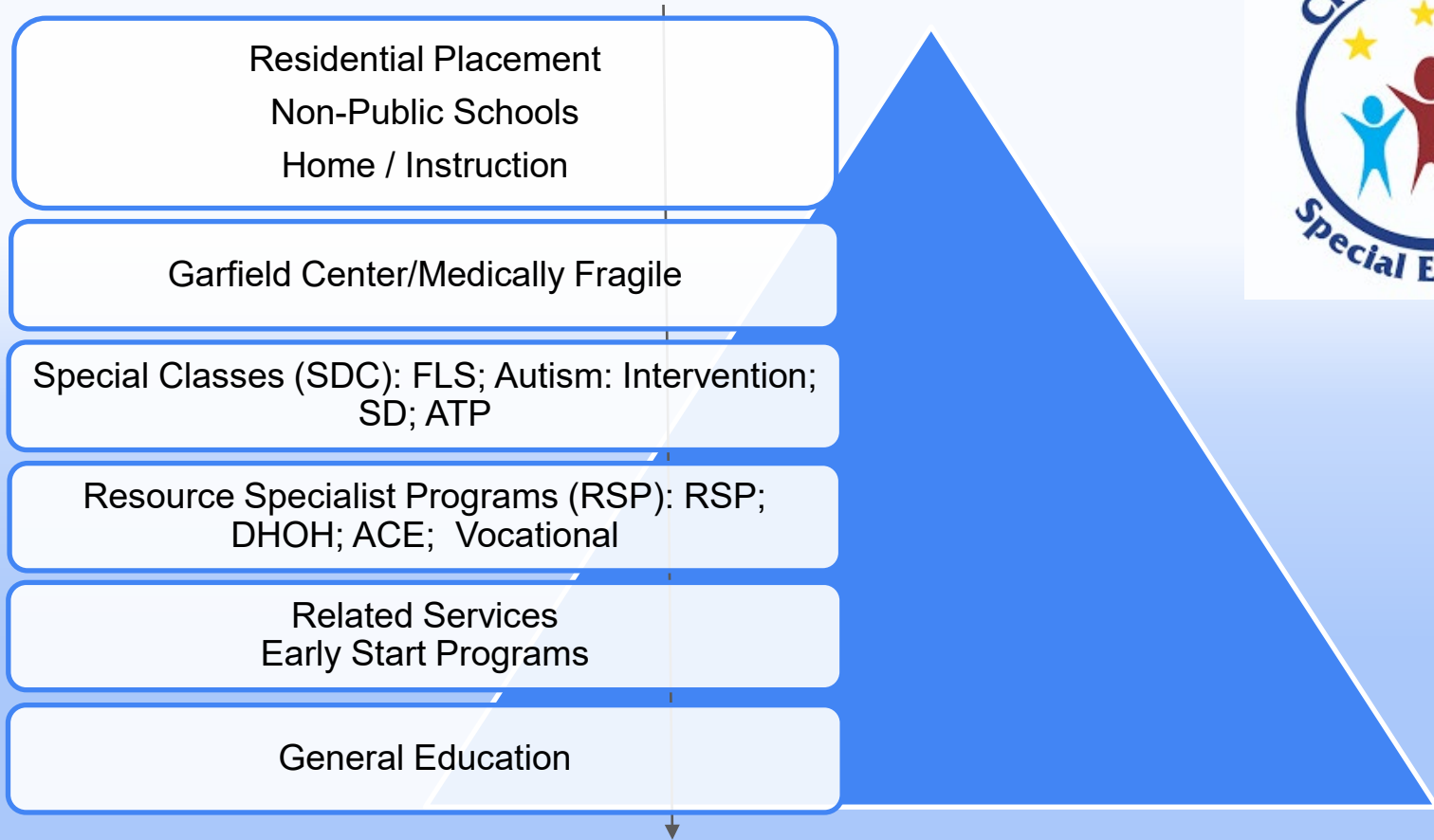




Who are we?

- Clovis Unified is a single -district SELPA (Special Education Local Plan Area).
- 5200+ eligible students with an Individual Education Program (IEP) or an Individual Family Service Plan (IFSP)
- 1500+ SPED Educators, Paraprofessionals and Related Support Teams

Continuum of Programs...



Early Intervention:



- Children ages 0 -3 years with Developmental Delays, or at risk for having a developmental disability, who qualify for Early Start Services through Central Valley Regional Center (CVRC) and live within CUSD boundaries, are eligible to receive early intervention through the Clovis Infant Toddler Intervention program (CITI kids).
- They receive home -based and center -based services from a multidisciplinary team.
- Children with a Solely Low Incidence disability: Deaf/Hard of Hearing (DHH), Visual Impairment (VI) or Orthopedic Impairment (OI) may be eligible to receive early intervention services from the CITI Kids Team without being clients of CVRC.



Resource Specialist Program (RSP):



The Resource Specialist Program (RSP) provides specialized services at elementary and secondary levels. Services are designed to accommodate students with special needs who are capable of meeting the state and district approved standards for graduation with a diploma.



RSP: Direct Instruction

RSP Direct Instruction (DI) - provides specially designed instruction during the academic block for students at the secondary level who require vocational readiness skills. Upon graduation, students receive a Certificate of Completion for Vocational Competency and Vocational Competency Checklist based on skills mastered from the Employability Skills Frameworks and Common Core.



RSP: Academic Core Essentials (ACE)

- ACE is a direct-instruction diploma -bound program provided at the secondary level. Courses are taught by Special Education teachers, and ACE students are held to the District's identified Essential Standards for the required courses of study which align to the California Education Code minimum set of requirements for graduation from California high schools.
- ACE does not meet the University of California (UC) and the California State University (CSU) systems' minimum set of courses required for admission. However, students will be able to apply for enrollment at a community college and will be eligible to be considered for all financial aid programs.

Deaf/Hard of Hearing Program

- Programs housed on Garfield Elementary, Alta Sierra Intermediate, and Buchanan High School campuses
- Diploma and non -diploma pathways
- Programs designed for small group & individualized instruction with language emphasis for students who are deaf or hard of hearing (D/HOH).
- Use of specialized instructional strategies, materials, equipment and/or assistive technology for instruction in the student's preferred communication mode in academic and elective areas, as designated by the IEP.
- True total communication in Sign language, Oral, and Auditory modalities
- Qualified sign language interpreters





Special Day Classes (SDC):

CUSD provides Special Day Classes (SDC) for children with special needs.

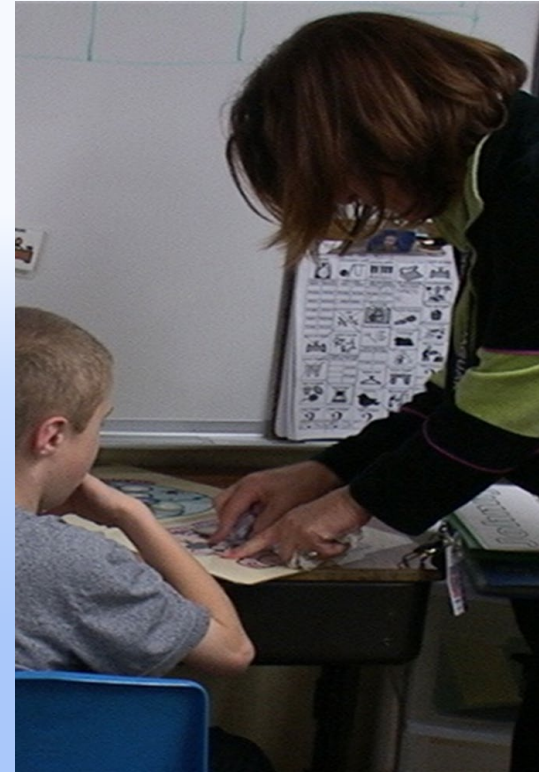
Functional Life Skills

Intensive Autism

Intervention

Severe Disabilities and Extensive Support Needs

Adult Transition





Special Day Classes (SDC):

- These classes stress functional academics using curriculum that aligns to state standards in programs that are located on various elementary and secondary school campuses throughout the district.
- These programs are designed for small group and individualized instruction for children who represent a wide variety of disabilities and learning needs who would not receive educational benefit from a less restrictive educational placement.
- Students are included in general education activities as designated on each IEP.





SDC Preschool:

- The Preschool Special Day Class (SDC) Programs are located throughout CUSD.
- Some of the Preschool SDC sites are co - licensed with our State Funded Preschool program which allows our SDC preschoolers maximum time spent with their general education peers in our various inclusion classes.



SDC: Functional Life Skills



- The Functional Life Skills (FLS) Program, is designed for students with disabilities whose educational needs cannot be met through the Clovis Unified School District's general education curriculum framework.
- Students generally present with global learning needs, which includes delays with adaptive skill development.



SDC: Functional Life Skills

- The alternative curriculum includes goals and objectives in the areas of: Daily Living, Personal/Social Skills, Functional Academics, and Occupational Guidance/Prevocational Skills. This pathway leads to Certificate of Completion upon graduation.
- The course of study that follows an alternative path to a diploma will include state -standards based curriculum in VAPA and various areas of academics to include English, Math, Sciences, and History.

The logo for PALS (Program for the Acquisition of Language and Social Skills) features the letters P, A, L, and S in large, bold, sans-serif font. The 'P' is red, 'A' is orange, 'L' is green, and 'S' is purple. A small yellow speech bubble icon is located in the top left corner of the slide.

PALS

SDC: Intensive
Autism Program
Preschool, Trans-
Kinder, &
Kindergarten

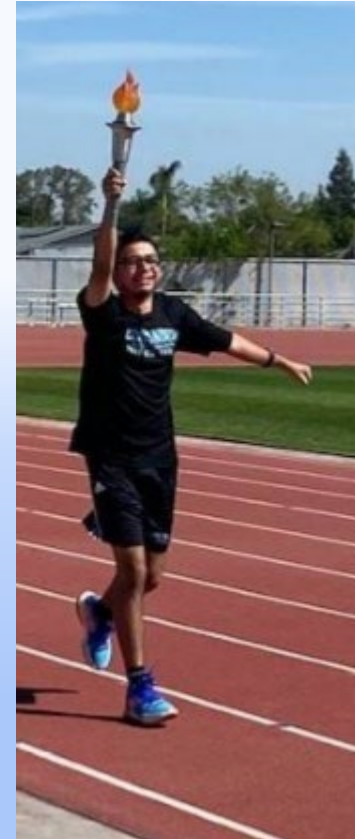


- Program for the Acquisition of Language and Social Skills (PALS) serves children who are preschool through kindergarten age that demonstrate autistic -like behaviors and require intensive school -based interventions.
- Evidenced Based Practices, including Applied Behavioral Analysis (ABA)/ Discrete Trial (DT) teaching techniques and language and social methodologies are employed within these programs.



SDC: Intensive Autism Program

- The Elementary Intensive Autism Program (EIAP), Intermediate Intensive Autism Program (IIAP), and Adolescent Intensive Autism Program are designed for students who present with autistic -like behaviors and require intensive intervention.
- This program builds on the foundation established in early intervention programs like PALS, focusing on IEPs tailored to each student's unique educational needs. These programs use evidence -based strategies, such as Applied Behavior Analysis (ABA), visual supports, and communication aids to develop language, social, and academic skills.
- Upon completion of the alternative course of study, students will receive either a diploma through an Alternative Pathway or a certificate of completion, based on the IEP.





SDC: Intervention Program

- The Elementary Intervention Program (EIP), Intermediate Intervention Program (IIP), and Adolescent Intervention Program (AIP) is an educationally therapeutic program designed for students whose educational services cannot be provided exclusively within the general education classroom.
- Students require a high level of structure and supervision in a therapeutic milieu to address individual social, emotional and/or behavioral needs.
- Students typically receive instruction from general education curriculum and work to earn a high school diploma; Some may receive a Certificate of Completion.



SDC: Therapeutic Intervention Program

- The Therapeutic Intervention Program (TIP) is a therapeutic program designed for students who require a more intensive therapeutic program as they are unable to maintain safety for themselves or others on a comprehensive campus.
- The therapeutic milieu in each program, creates a learning environment focused on academic engagement and the social/emotional/behavioral competencies.
- Students typically receive instruction from general education curriculum and complete coursework to earn high school diploma.

SDC: Severely Disabled Programs

Extensive Support Needs



- Students in these programs have significant global delays in all domains. They often have medical needs, so classrooms are also staffed with nursing support.
- These programs utilize an interdisciplinary team approach in which teachers regularly consult with various service providers to assist in the individualization of each student's programming. A variety of teaching strategies are used to develop functional communication and adaptive skills.



SDC: Garfield Center Medical Therapy Unit (MTU)



- Garfield Center is an educational facility serving CUSD's medically fragile students with severe disabilities from ages 3 -22.
- In addition to special education teachers and support staff, LVNs and RNs are an integral component of this program due to the severe health risks and needs of our students.
- Opportunities for interacting with typical peers in a vital component of the program.

Adult Transition Program (ATP)



The Adult Transition Program (ATP) provides a continuation of special education services for students 18-22 years of age with an emphasis on skill development to increase the ability to participate safely in the community. Curriculum focuses on functional academics, community access, self-advocacy, daily living skills, and vocational skills. Activities will occur within the classroom and community settings using neighborhood resources.



Home Instruction/Hospital, ~~Public School~~ (NPS) & Residential Placement (RTC)



Related Services

- Audiologist
- Auditory Therapist
- Itinerant Deaf/Hard of Hearing (D/HOH)
- Physical Therapy (PT)
- Occupational Therapy (OT)
- Speech and Language Therapy (SLP)
- Assistive Technology (AT)
- Adapted Physical Education (APE)



- Psychological Services
- Educationally Related Mental Health Services
- Health & Nursing
- Itinerant Teachers of the Visually Impaired
- Brailist
- Orientation & Mobility (O & M)
- Transportation

**Wow! That's a lot of
information!**

**But, I still have
questions...**





Parent Website Resources

CUSD Website Special Education Page:

<https://www.cusd.com/SpecialEducation.aspx>

Family Resource Center:

[https://www.cusd.com/Parent%20Resources -
FamilyResourceCenter.aspx](https://www.cusd.com/Parent%20Resources-FamilyResourceCenter.aspx)

Community Advisory Committee (CAC):

[https://www.cusd.com/Community -
CommunityAdvisoryCommitteeCAC.aspx](https://www.cusd.com/Community-CommunityAdvisoryCommitteeCAC.aspx)

California Department of Education

<https://www.cde.ca.gov/>



Parent Contact Resources

Who to Contact

Case Manager

Site leader

Program Specialist

Special Education Assistant Director

Special Education Administrator

SELPA Administrator



Parent Document Resources

Procedural Safeguards

Ask the Case Manager or Program Specialist
Search on the CDE website (many languages)

Alternate Dispute Resolution (ADR) Manual

Before, During, and After the IEP

Communication Tips

Resolving Differences

Acronyms

Q & A

More Parent Resources

The Family Resource Center offers:

- Parent-to-parent support and educational information to CUSD families with children ages birth to 22 who have an Individual Education Plan (IEP) or Individual Family Service Plan (IFSP).
- Parent education workshops
- Public awareness and Child Find activities
- Support to families to navigate Special Education, community resources, and Early Start Services
- To develop channels of communication between the district, families, and relevant community agencies



Theresa Pafford, Administrator SELPA

327-9410

Carrie Carter Ed.D., Administrator Special Education

327-9439

